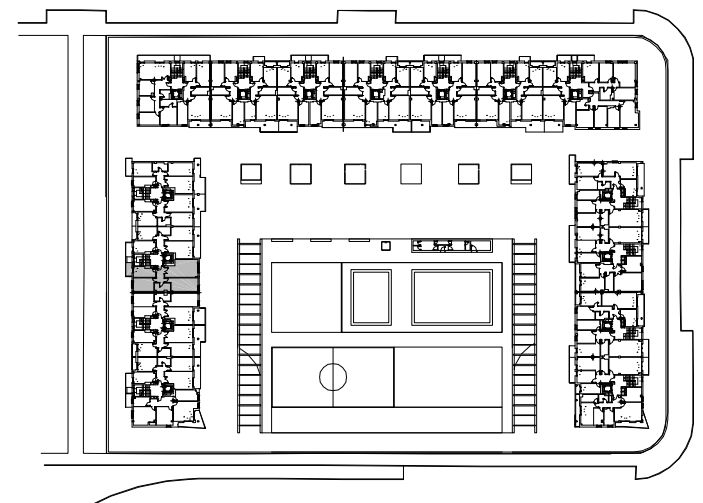
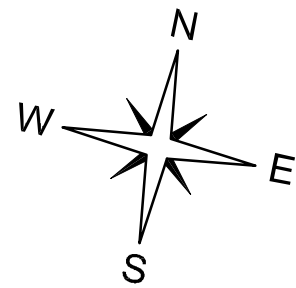


**CUADRO DE SUPERFICIES**

SUP. TOTAL CONSTRUIDA =	78.47 m2
SUP. UTIL INTERIOR =	66.92 m2
SUP. UTIL EXTERIOR COMPLETA (T/2) =	1.52 m2
TOTAL SUP. UTIL COMPUTABLE =	68.44 m2



**EDIFICIO 1**

**PLANTA TRES. ESCALERA 2. VIVIENDA TIPO A.**