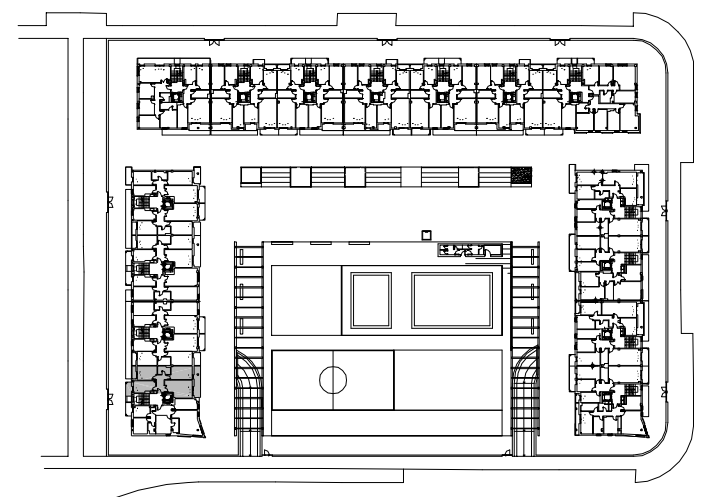
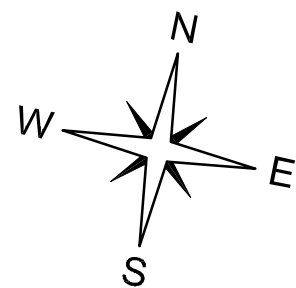


CUADRO DE SUPERFICIES

SUP. TOTAL CONSTRUIDA =	80.11 m2
SUP. UTIL INTERIOR =	60.10 m2
SUP. UTIL EXTERIOR COMPLETA (T/2) =	6.48 m2
TOTAL SUP. UTIL COMPUTABLE =	66.58 m2



EDIFICIO 1

PLANTA 1ª Y 2ª. ESCALERA 4. VIVIENDA TIPO B.