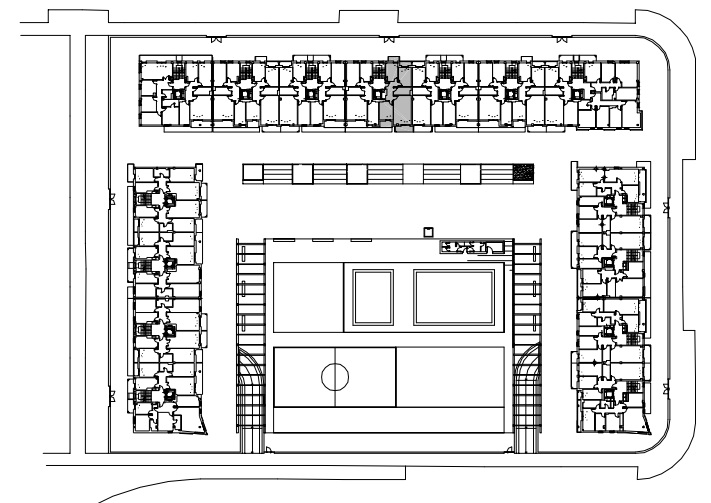
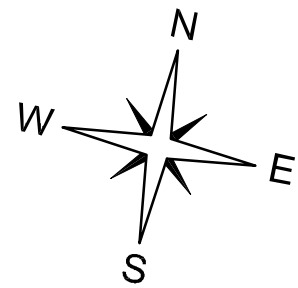


CUADRO DE SUPERFICIES

SUP. TOTAL CONSTRUIDA =	78.14 m2
SUP. UTIL INTERIOR =	60.85 m2
SUP. UTIL EXTERIOR COMPLETA (T/2) =	5.53 m2
TOTAL SUP. UTIL COMPUTABLE =	66.38 m2



EDIFICIO 2

PLANTA 1ª Y 2ª. ESCALERA 4. VIVIENDA TIPO B.