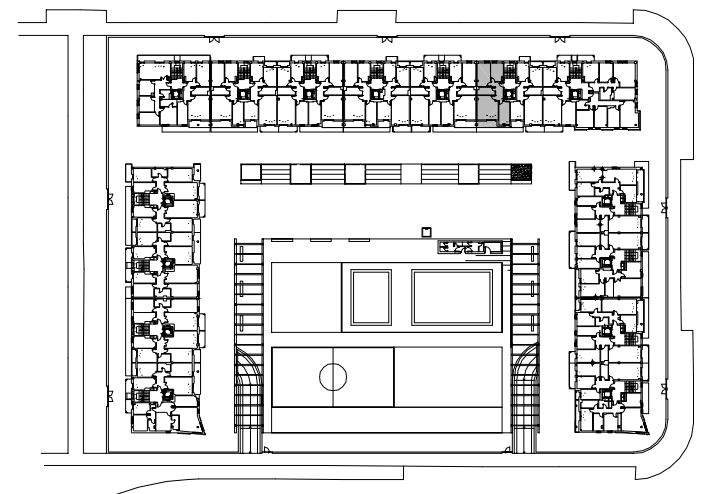
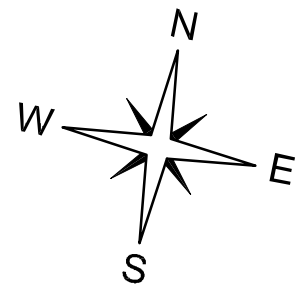


CUADRO DE SUPERFICIES

SUP. TOTAL CONSTRUIDA =	76.54 m2
SUP. UTIL INTERIOR =	61.83 m2
SUP. UTIL EXTERIOR COMPLETA (T/2) =	2.82 m2
TOTAL SUP. UTIL COMPUTABLE =	64.65 m2

A



EDIFICIO 2

PLANTA 1ª Y 2ª. ESCALERA 6. VIVIENDA TIPO A.