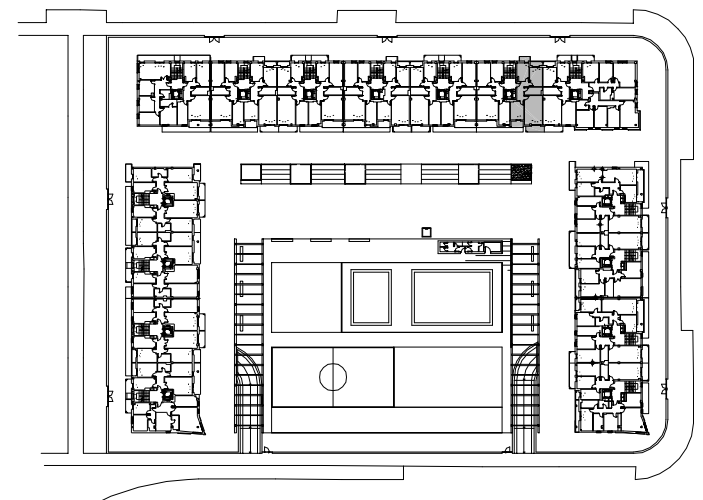
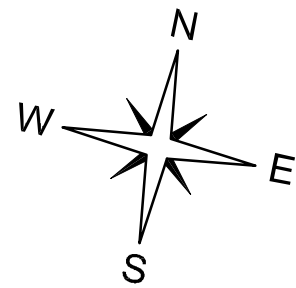


**CUADRO DE SUPERFICIES**

SUP. TOTAL CONSTRUIDA =	78.14 m2
SUP. UTIL INTERIOR =	61.14 m2
SUP. UTIL EXTERIOR COMPLETA (T/2) =	5.53 m2
TOTAL SUP. UTIL COMPUTABLE =	66.67 m2



**EDIFICIO 2**

**PLANTA 1ª Y 2ª. ESCALERA 6. VIVIENDA TIPO B.**