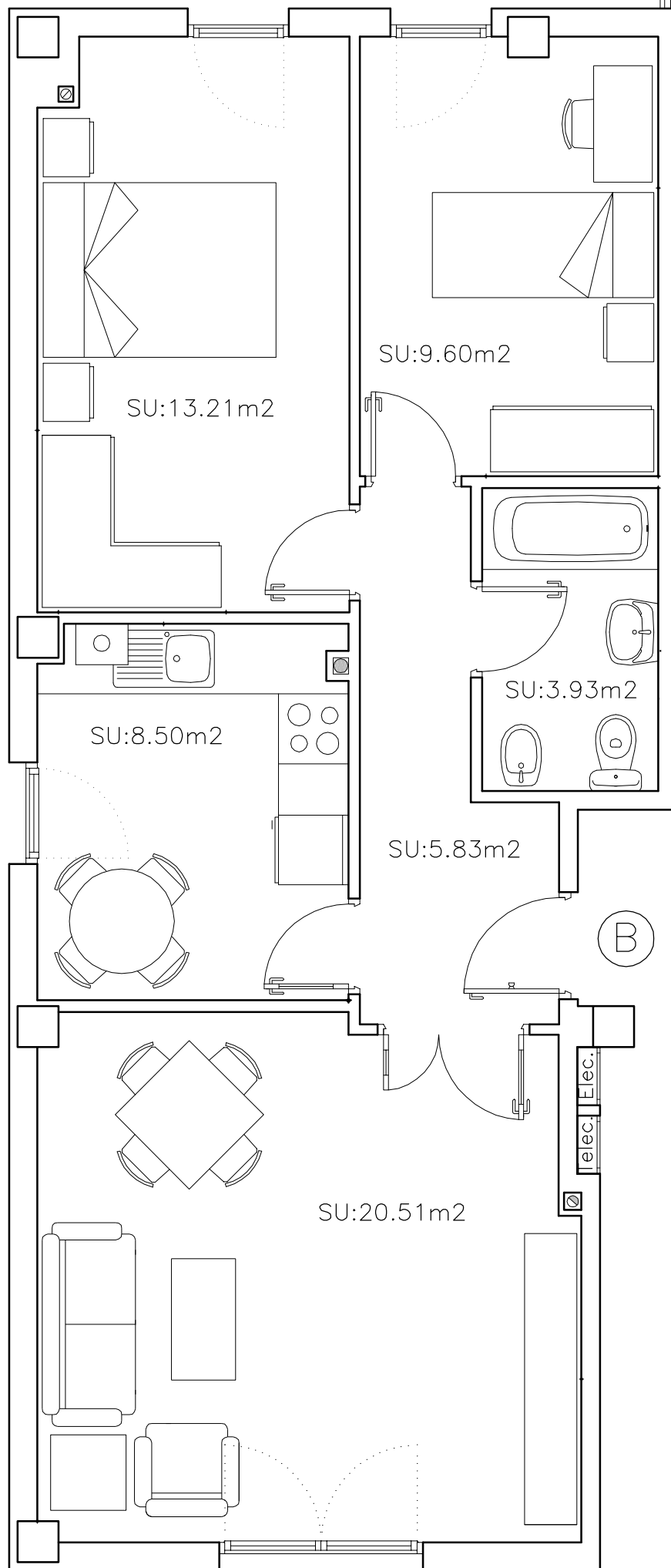


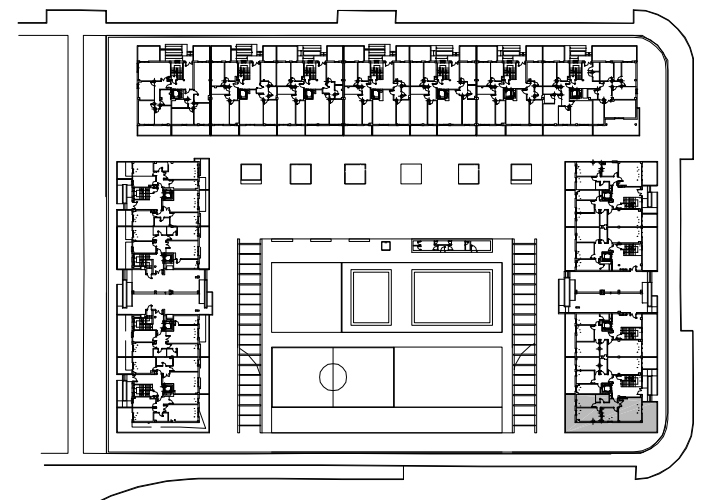
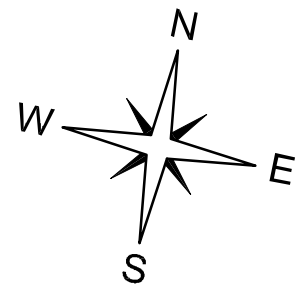
ZONA CUBIERTA
 $SU:21.76/2=10.88m^2$



ZONA CUBIERTA
 $SU:2.76/2=1.38m^2$

CUADRO DE SUPERFICIES

SUP. TOTAL CONSTRUIDA =	70.80 m ²
SUP. UTIL INTERIOR =	61.58 m ²
SUP. UTIL EXTERIOR COMPLETA (T/2) =	12.26 m ²
TOTAL SUP. UTIL COMPUTABLE =	73.84 m ²



EDIFICIO 3

PLANTA BAJA. ESCALERA 4. VIVIENDA TIPO B.