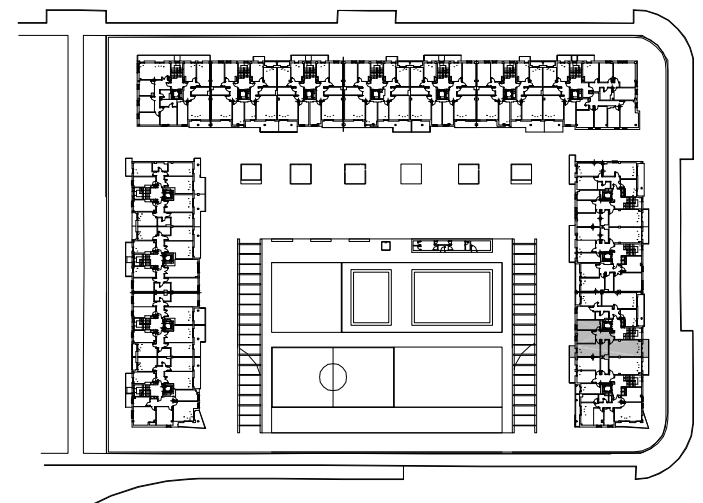
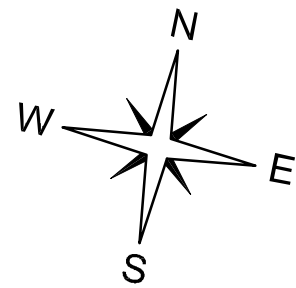


CUADRO DE SUPERFICIES

SUP. TOTAL CONSTRUIDA =	74.66 m ²
SUP. UTIL INTERIOR =	62.71 m ²
SUP. UTIL EXTERIOR COMPLETA (T/2) =	3.25 m ²
TOTAL SUP. UTIL COMPUTABLE =	65.96 m ²



EDIFICIO 3

PLANTA TRES. ESCALERA 3. VIVIENDA TIPO A.