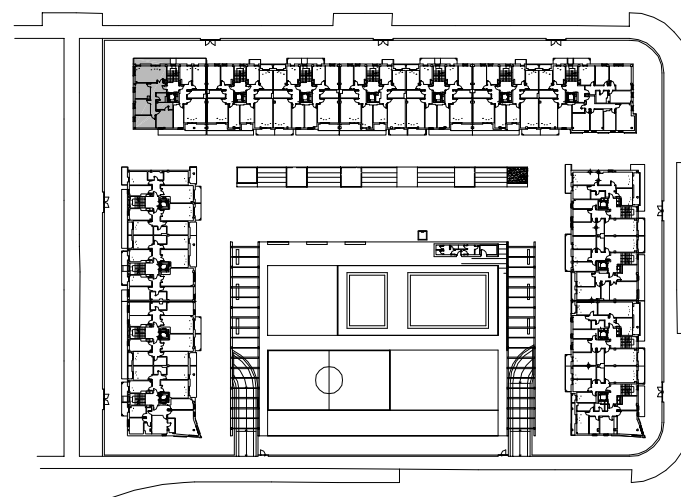
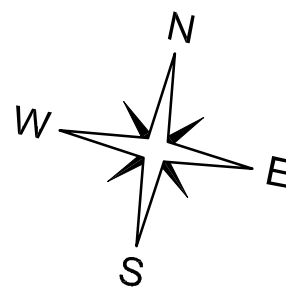


CUADRO DE SUPERFICIES

SUP. TOTAL CONSTRUIDA =	95.95 m2
SUP. UTIL INTERIOR =	78.46 m2
SUP. UTIL EXTERIOR COMPLETA (T/2) =	4.18 m2
TOTAL SUP. UTIL COMPUTABLE =	82.64 m2



EDIFICIO 2

PLANTA 1ª, 2ª Y 3ª. ESCALERA 1. VIVIENDA TIPO A.