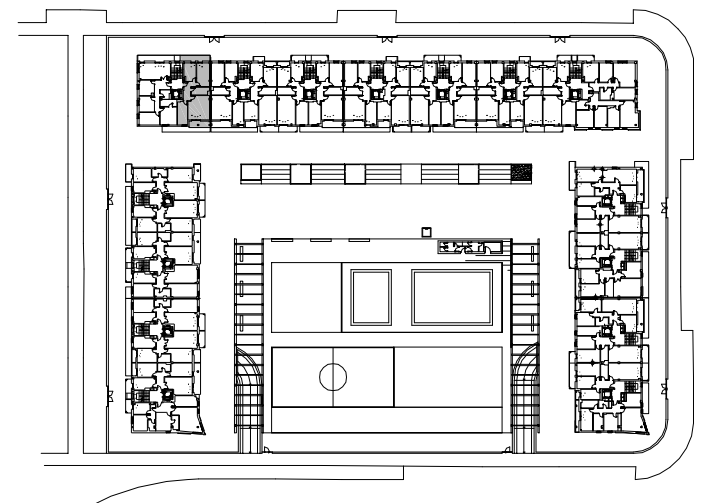
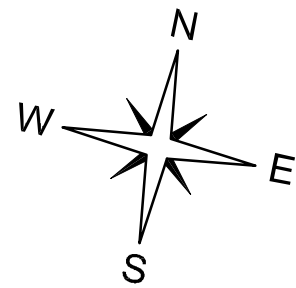


CUADRO DE SUPERFICIES

SUP. TOTAL CONSTRUIDA =	80.13 m ²
SUP. UTIL INTERIOR =	62.05 m ²
SUP. UTIL EXTERIOR COMPLETA (T/2) =	5.97 m ²
TOTAL SUP. UTIL COMPUTABLE =	68.02 m ²



EDIFICIO 2

PLANTA 1ª, 2ª Y 3ª. ESCALERA 1. VIVIENDA TIPO B.