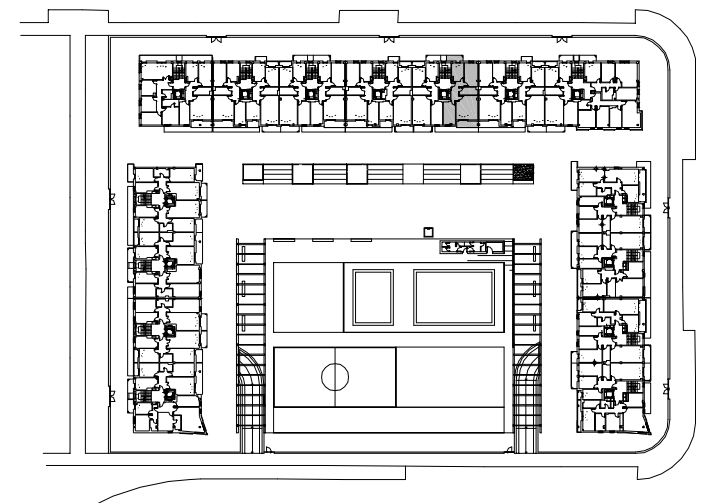
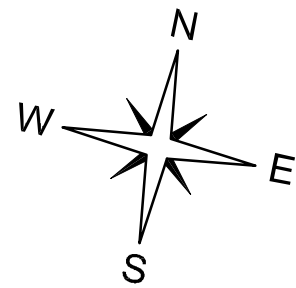


CUADRO DE SUPERFICIES

SUP. TOTAL CONSTRUIDA =	80.58 m2
SUP. UTIL INTERIOR =	63.82 m2
SUP. UTIL EXTERIOR COMPLETA (T/2) =	4.47 m2
TOTAL SUP. UTIL COMPUTABLE =	68.29 m2



EDIFICIO 2

PLANTA 1ª Y 2ª. ESCALERA 5. VIVIENDA TIPO B.